



BRS TECHNO CORPORATION

Company Profile



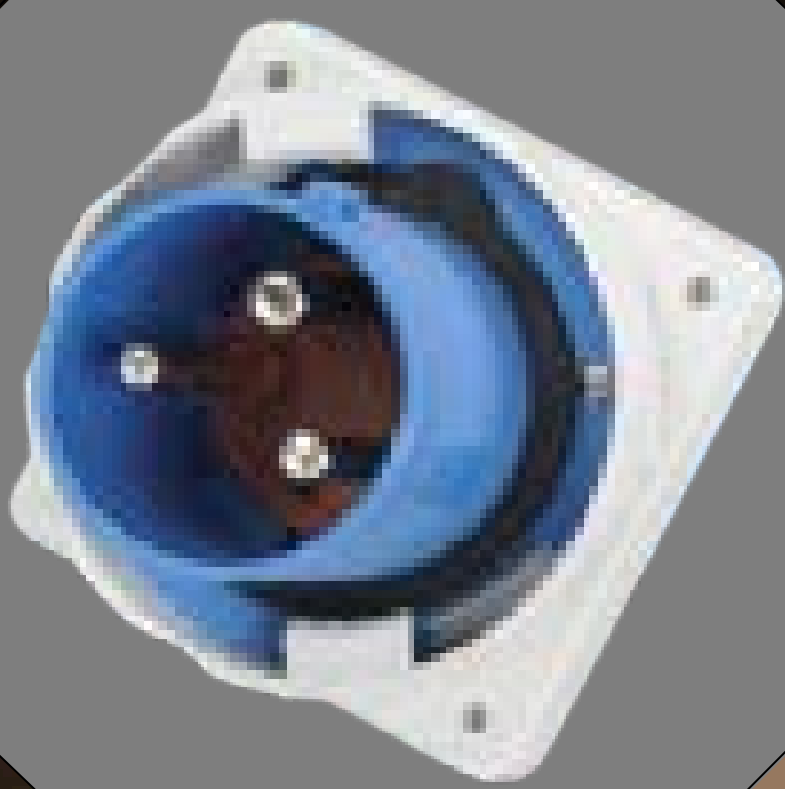
AN ISO 9001 : 2015 CERTIFIED CO.

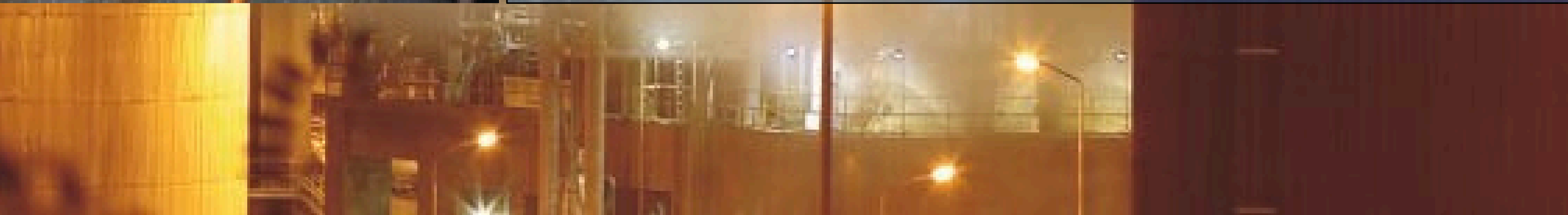
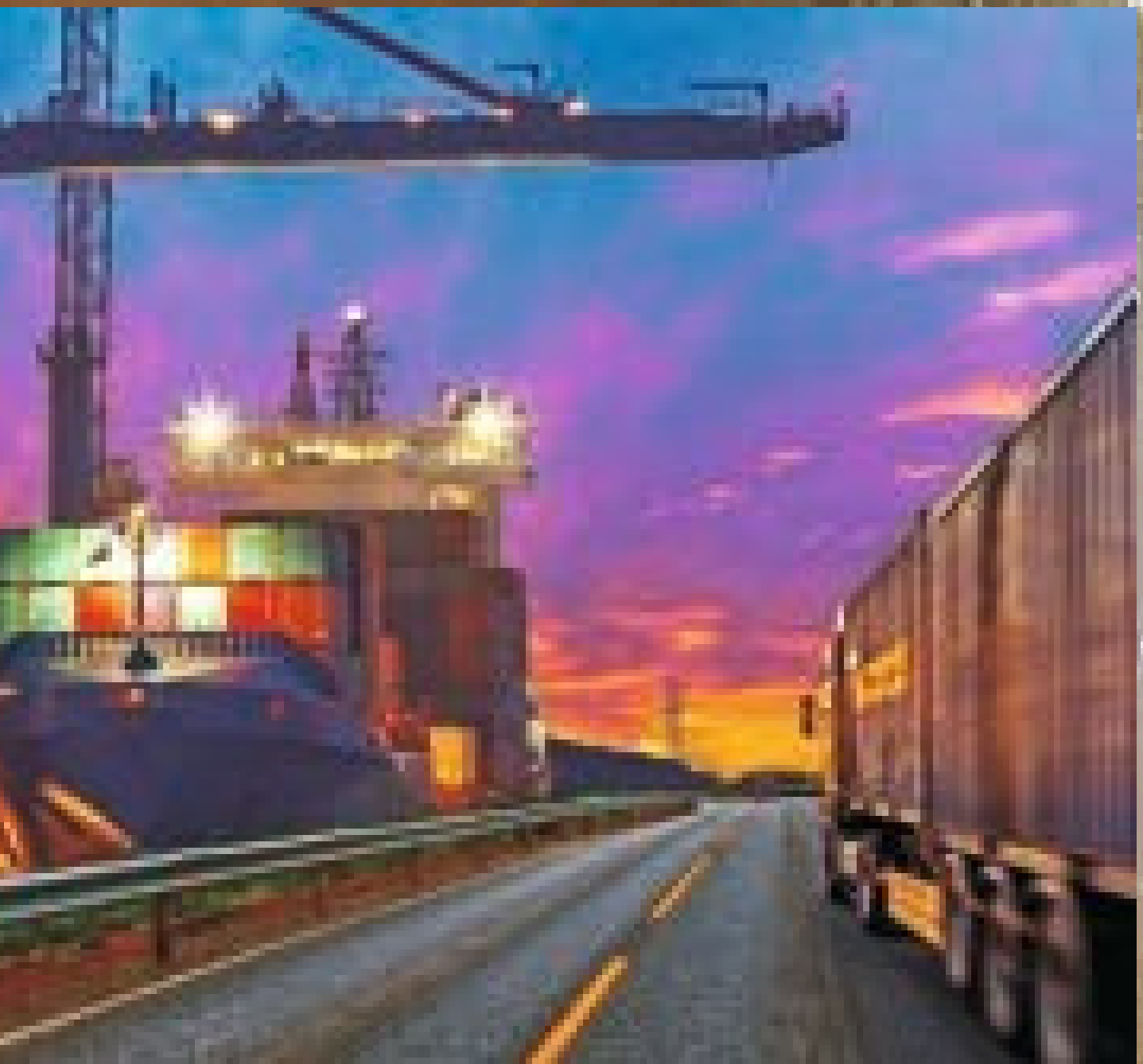
Since its inception in 2022, **BRS TECHNO CORPORATION** has positioned itself as a key player in providing innovative electrical solutions for construction sites.

We offer a wide range of products including LED flood lights, industrial plugs and sockets, and industrial distribution panels, designed to meet the demands of modern infrastructure projects.

With a strong focus on safety, energy efficiency, durability, and cutting-edge technology, we are committed to supporting the growth and success of construction projects through reliable and sustainable electrical solutions.

Product Preview







ABOUT OUR COMPANY

A BRIEF STORY ABOUT THE COMPANY

BRS TECHNO CORPORATION established in 2022, is a forward-thinking company specializing in high-performance electrical solutions tailored for the construction and industrial sectors. The company is focused on delivering reliable, energy-efficient, and safety-compliant products. With a strong commitment to innovation and quality, **BRS TECHNO CORPORATION** aims to revolutionize the way electrical systems are deployed across construction sites and industrial environments.





VISION

BRS TECHNO CORPORATION aims to become a leading provider of innovative and sustainable electrical solutions in the construction and industrial sectors. By focusing on energy-efficient products, cutting-edge technology, and safety, the company seeks to transform how electrical systems are deployed, managed, and maintained on construction sites, ultimately contributing to safer, more efficient, and more cost-effective operations.

MISSION

BRS TECHNO CORPORATION mission is to deliver high-quality, reliable, and energy-efficient electrical products that cater to the evolving needs of the construction industry. Through continuous innovation and a commitment to safety, **BRS TECHNO CORPORATION** seeks to help businesses reduce costs, increase operational efficiency, and maintain the highest standards of electrical safety on construction sites.





Core Electrical Solutions

LED Flood Lights

Bright and Durable -: **BRS TECHNO CORPORATION** LED flood lights are designed to deliver superior illumination for large outdoor areas, providing high lumen output for construction sites that require constant, reliable lighting, even in challenging environments.

Energy-Efficient -: With a focus on reducing energy consumption, these LED flood lights offer significant energy savings compared to traditional lighting options, making them ideal for large-scale construction projects where lighting is needed around the clock.

Weatherproof and Impact-Resistant -: Built to withstand harsh outdoor conditions, **BRS TECHNO CORPORATION** LED flood lights come with high IP ratings (IP66 or higher), making them resistant to dust, water, and vibrations – ensuring long-lasting performance in even the most demanding construction environments.

Enhanced Safety -: Designed to minimize glare and provide uniform lighting, these flood lights improve visibility on construction sites, helping to prevent accidents and ensure safe working conditions during night shifts or in poorly lit areas.

Industrial Plugs and Sockets

Heavy-Duty and Reliable -: **BRS TECHNO CORPORATION** offers industrial-grade plugs and sockets designed to withstand the rough and rigorous conditions of construction sites. These products are built for frequent use and high electrical loads, ensuring secure, safe, and uninterrupted power supply to machinery and equipment.

High Protection Standards -: The plugs and sockets feature IP-rated enclosures (IP44, IP67, or higher) for protection against dust, water, and other environmental factors, ensuring a reliable power connection even in challenging conditions.

Quick Connection and Disconnection -: With a focus on operational efficiency, these plugs and sockets allow for quick, secure connections and disconnections, reducing downtime and ensuring workers can quickly access power when needed.

Multiple Configurations -: The company offers a variety of sizes and configurations, catering to different voltage and current requirements, ensuring compatibility with a wide range of construction equipment and tools.



Industrial Distribution Panels

Modular and Scalable -: **BRS TECHNO CORPORATION** industrial distribution panels are designed to provide flexible, scalable power management solutions for construction sites. These panels can be customized to meet specific voltage, load, and safety requirements, making them ideal for both small and large-scale projects.

Advanced Protection Features -: The distribution panels are equipped with circuit breakers, overload protection, and fault detection systems to ensure that electrical systems are safeguarded against short circuits, overloads, and other electrical faults, protecting both workers and equipment.

Remote Monitoring and Smart Integration -: Leveraging modern technology, **BRS TECHNO CORPORATION** distribution panels can integrate with smart monitoring systems, enabling real-time tracking of power consumption, fault detection, and remote diagnostics. This helps project managers monitor and optimize energy use, reducing waste and improving operational efficiency.

Durability and Safety -: Designed to meet global standards IEC, UL, CE, these panels are built with high-quality materials to endure extreme weather, vibrations, and potential physical impacts, ensuring the safety and stability of electrical infrastructure on construction sites.

Key Features

Energy Efficiency -: Every product, from LED lighting to industrial distribution panels, is designed with energy savings in mind, helping to reduce operating costs and promote environmentally sustainable practices on construction sites.

Durability and Reliability -: The company's products are built to withstand the demanding conditions of construction sites, including exposure to extreme weather, vibrations, and dust, ensuring that they continue to function optimally throughout the project lifecycle.

Safety and Compliance -: All products adhere to the highest safety standards and local regulations as IEC, ISO, ROHS, and CE certifications, ensuring that they contribute to a safe working environment by preventing electrical hazards and minimizing risks to workers.

Innovation and Smart Technology -: **BRS TECHNO CORPORATION** integrates advanced technologies like IoT, smart monitoring, and automated power management systems into their electrical solutions to provide real-time insights and optimize energy consumption and operational efficiency.



Conclusion

Since its establishment in 2022, **BRS TECHNO CORPORATION** has emerged as a trusted provider of innovative electrical solutions tailored for construction sites. With a strong product portfolio that includes LED flood lights, industrial plugs and sockets, and industrial distribution panels, the company continues to meet the evolving demands of modern infrastructure projects.

Driven by a commitment to safety, energy efficiency, durability, and advanced technology, **BRS TECHNO CORPORATION** ensures that every solution delivers reliability and long-term value.

As the construction industry grows, the company remains dedicated to supporting its clients with high-quality, sustainable, and dependable electrical solutions, contributing to the success of projects across various sectors.

REB

Why Choose Us

Reliable Delivery

We understand the importance of time in your business. That's why over 99% of our orders are dispatched on time, ensuring you can plan with confidence.

Competitive Pricing

Working within a budget matters. We offer a price beat guarantee on like-for-like products, giving you the best value without compromising quality.

24/7 Support

Our sales and support team is available 24 hours a day, 7 days a week, so you can get assistance whenever it suits you.

Custom Sourcing Solutions

Looking for something unique or hard to find? Our dedicated customer service team specializes in sourcing out-of-the-ordinary products, ensuring you get exactly what you need.

Our Commitment

We aim to provide seamless service, dependable delivery, and tailored solutions that support your success every step of the way.



THANK YOU



Contact Us BRS Techno Corporation

Address: B-342 Block B Sector 105, Noida, (U. P.)
201304

Phone: +91 92583 52344

Phone: +91 70174 00121

Email: info@brstechno.com

Website: www.brstechno.com

